

BB \flat TUBA FINGERING CHART

The numbers indicate which valves should be pressed down.
 0 = No valves pressed down.

E	F \flat	E \sharp	F	F \sharp	G \flat	G
1 2 3		1 3		2 3		1 2

G \sharp	A \flat	A	A \sharp	B \flat	B	C \flat
1		2	0		1 2 3	

B \sharp	C	C \sharp	D \flat	D	D \sharp	E \flat
1 3		2 3		1 2	1	

E	F \flat	E \sharp	F	F \sharp	G \flat	G
2		0		2 3		1 2

G \sharp	A \flat	A	A \sharp	B \flat	B	C \flat	B \sharp	C
1		2	0	1 2	1 2		1	

C \sharp	D \flat	D	D \sharp	E \flat	E	F \flat	E \sharp	F
2		0	1		2		0	

REVIEW

B \flat MAJOR
KEY SIGNATURE**1** WARM-UP - Band Arrangement

Andante

f

2 B \flat MAJOR SCALE SKILL 

Moderato

mf

, Arpeggio

, Chords

► Lines with a medal are *Achievement Lines*. The chart on page 47 can be used to record your progress.

3 BOTANY BAY Page 40 

Australian Folk Song

Moderato

mp

mf

f

mp

► When you see a page number followed by an arrow, *Excellerate* to the page indicated for additional studies.

4 DRIVE TIME

Andante

mp

5 SHEPHERD'S HEY 

English Folk Song

Moderato

mf

p

Fine

D.C. al Fine

REVIEW

E \flat MAJOR KEY SIGNATURE



6 E \flat MAJOR SCALE SKILL

Moderato , Arpeggio , Chords

mf

► Are you playing with a good embouchure and hand position?

7 MOLLY MALONE

Andante Irish Folk Song

mp *f* *mp* *mp*

1. 2.

rit.

8 NO LOOKING BACK Page 40

Moderato

mf

9 TURKISH MARCH Wolfgang Amadeus Mozart (1756 - 1791)

Allegro

mf

1. 2.

10 HYMN OF THANKSGIVING - Band Arrangement Johann Crüger (1598 - 1662) arr. Bruce Pearson (b. 1942)

Andante

mf *p* *mf*

p *f* *mf* *rit.*

REVIEW

F MAJOR KEY SIGNATURE



11 WARM-UP - Band Arrangement

Andante

mf

12 F MAJOR SCALE SKILL



Moderato

f

, Arpeggio

, Chords

13 KNUCKLEBUSTER

Moderato

mf

1.

2.

-Al-Bran
-Key: F
-Cnc: 6/8

14 GIVE ME THAT OLD TIME RELIGION

Page 40

American Spiritual

Allegro

f

clap

15

Composer _____ your name

Moderato

► Compose an ending for this melody. Title and play your composition.

16 FOR TUBAS ONLY



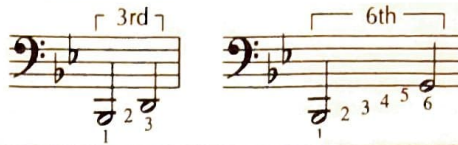
Page 40

Allegro

mf

SYNCOPATION

A rhythmic effect which places emphasis on a weak or unaccented part of the measure.

INTERVAL

The distance between any two notes.

17 SYNCOPATION SENSATION

Moderato

18 THE RIDDLE SONG

American Folk Song

Moderato

► Write in the counting and clap the rhythm before you play.

19 NOBODY KNOWS THE TROUBLE I'VE SEEN

American Spiritual

Moderato

20 INTERVAL INQUIRY

► Sing this exercise using the numbers before you play.

21 GO FOR EXCELLENCE!

American Folk Song

Allegro

"Liza Jane"

G MINOR KEY SIGNATURE



TEMPO

DIVISI

Part of the section plays the top notes and part of the section plays the bottom notes.

G minor has the same key signature as B \flat major.

Accelerando (accel.) - Gradually increase the tempo.

UNISON

Everyone plays the same notes.



22 WARM-UP - Band Arrangement

G **Andante**

23 G NATURAL MINOR SCALE SKILL

Moderato

24 G HARMONIC MINOR SCALE SKILL  **Page 40** 

Moderato

25 MINKA, MINKA

Ukrainian Folk Song

Moderato

26 LAREDO - Duet

Mexican Folk Song

Moderato *div.*

► Name the interval between the top and bottom notes of the last measure. _____

27 TURNING YOU LOOSE

Moderato

28 FOR TUBAS ONLY 

Allegro

DAL SEGNO AL FINE (D.S. AL FINE)

Go back to the sign (§) and play until the *Fine*.

JOYEUX NOËL

Band Arrangement

French Carol
arr. Chuck Elledge (b. 1961)

1-4 Moderato 4

5 6 7 8 9 10 11 12

13 14 15 16 17 18 19 20

21 22 23 24 25 26 27 28 (Fine)

29-32 4 33 34 35 36 37-40 4

41 42 43 44 45 46 47 48 49 50 51

52 53 54 55 56 57 58 59 60

61 62 63 64 65 66 67 68 D.S. al Fine

mp *mf* *p* *mf* *f* *mf* *rit.* *mp*

29 GO FOR EXCELLENCE!

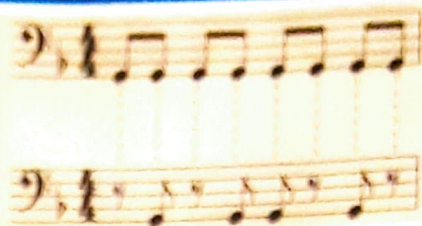


Moderato

f *Fine*

D.C. al Fine

EIGHTH REST



$\frac{7}{8}$ = $\frac{1}{2}$ count in $\frac{3}{4}$,

$\frac{7}{8}$, and $\frac{1}{4}$ time.

An eighth rest is as long as an eighth note.

30 EIGHTH REST ON THE BEAT

Moderato



► Write in the counting and clap the rhythm before you play.

31 EIGHTH REST OFF THE BEAT

Moderato



32 ACADEMIC FESTIVAL MARCH - Trio

Johannes Brahms (1833 - 1897)

Moderato



33 BREEZIN'

Allegro



34 YANKEE DOODLE - Duet

American Folk Song

Moderato



35 FOR TUBAS ONLY

Allegro



A^b MAJOR KEY SIGNATURE



This key signature means play all B's as B flats, all E's as E flats, all A's as A flats, and all D's as D flats.

TEXTURES

Monophony - a single unaccompanied melody.

Polyphony - two or more melodies played at the same time.

36 A^b MAJOR SCALE SKILL



Db Andante Db

f

Arpeggio Chords

37 GREASED LIGHTNING

Allegro

mf

38 PARTNER SONGS - Duet

Moderato

A. "White Coral Bells"

Traditional

B. "Vespers Song"

Russian Air

mf

mf

► For an example of monophony, play line A or line B alone. For an example of polyphony, play line A while someone else plays line B.

39 GO FOR EXCELLENCE!



Stephen Foster (1826 - 1864)

Moderato

"Oh! Susanna"

mp

f mp accel.

ENHARMONICS

F# = Gb

Notes that sound the same but are written differently.

ARTICULATION

Staccato (dot placed above or below note)
- Play short and detached.

TEMPO

Allegretto -
light and lively; slightly slower than **Allegro**.

40 WARM-UP - Band Arrangement

Andante

41 CHROMATIC CAPERS

Moderato Gb

42 SHENANDOAH



Page 40

American Folk Song

Andante

43 THEME FROM SYMPHONY NO. 94

Franz Joseph Haydn (1732 - 1809)

Andante

44 PARADE OF THE TIN SOLDIERS

Léon Jessel (1871 - 1942)

Allegretto

45 FOR TUBAS ONLY



Allegro

C MINOR KEY SIGNATURE



C minor has the same key signature as Eb major.

ARTICULATIONS



Tenuto (line placed above or below note) - Sustain for full value.



Legato - Play as smoothly as possible.

46 C NATURAL MINOR SCALE

Andante

mf

47 C HARMONIC MINOR SCALE



B Andante

mf

48 MARCHE SLAV

Peter Ilyich Tchaikovsky (1840 - 1893)

Andante

mf legato

49 GREENSLEEVES

English Song

B Moderato

mp legato

► Name the key in "Greensleeves." _____

50 JUBILATE

Wolfgang Amadeus Mozart (1756 - 1791)

Allegretto

mf

51 GO FOR EXCELLENCE!



Allegretto

mf

TEXTURE

Melody and Accompaniment - main melody is accompanied by chords or less important melodies called **countermelodies**.

52 WARM-UP

Andante

mf legato

53 HABAÑERA



Georges Bizet (1838 - 1875)

Andante

mf

54 SMOOTH AS SILK

Allegretto

f

55 HEY HO - Round (Canon)

Page 41

Medieval Song

Allegro

f

56 THE BRITISH GRENADIERS - Duet

English Folk Song

Allegro

A. Melody

f

B. Countermelody

57 FOR TUBAS ONLY



Allegro

mf

TIME SIGNATURE



This time signature is called **cut time** or *alla breve*.

$\text{C} = 2 = 2$ counts in each measure
 $\text{C} = 2 = 2$ = half note gets 1 count

written:



sounds:



58 CUT AND PASTE

Moderato



► Write in the counting and clap the rhythm before you play.

59 OATS, PEAS, BEANS

American Folk Song

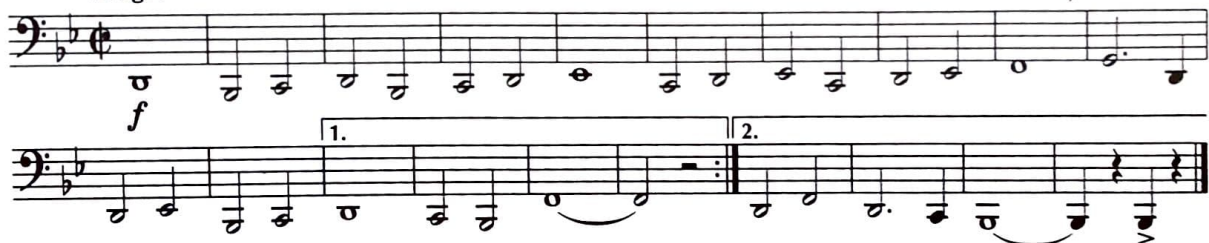
Moderato



60 THE VICTORS

Fight Song

Allegro



61 OVER EASY

Page 41



62 GO FOR EXCELLENCE!



John Philip Sousa (1854 - 1932)

Allegretto

"High School Cadets March"



ENHARMONICS

C# = Db

CHORD

fifth
third
root

Two or more pitches sounded at the same time.

63 WARM-UP - Band Arrangement

Andante

mf C#

64 DANISH ROLL

Danish Folk Song

Moderato

mp *f* *Fine*
D.C. al Fine

65 RUSSIAN SAILORS' DANCE



Reinhold Glière (1875 - 1956)

Allegretto

f *Fine* *mf* *D.C. al Fine*

66 CHORD CAPERS

major chord minor chord

► Listen for the different types of chords played by the full band.

67 FOR TUBAS ONLY



Allegro

mf

ENHARMONICS

$C\# = D\flat$ $D\# = E\flat$ $G\# = A\flat$

68 CHROMATIC SCALE SKILL

Andante C# D# G#

f

69 SAILING THE HIGH SEAS

Moderato

mp *mf* *f*

70 CHROMATIC MARCH

Page 41 

Allegro

f *p* - 1st time
f - 2nd time

71 MANHATTAN BEACH MARCH

John Philip Sousa (1854 - 1932)

Allegro

mf *f*

72 GO FOR EXCELLENCE!

Moderato

mf *f*

► Play using each of the following articulations:

- A.  B.  C.  D. 

DA CAPO AL CODA (D.C. AL CODA)

Go back to the beginning and play until the coda sign (⊕). When you reach the coda sign, skip to the *Coda* (⊕).

ROCK ISLAND EXPRESS

Band Arrangement

Chuck Elledge (b. 1961)

Allegro

1 2 3 4 5 6

7 8 9 10 11 12

13 14 15 16 17 18

19 20 21 22 23 24 25 26

27 28 29 30 31 32

33 34 35 36 37 38 *D.C. al Coda*

⊕ *Coda*

39 40 41 42 43 44

45 46 47 48 49 50

51 52 53 54 55 56

f

TIME SIGNATURE



3 = 3 counts in each measure
8 = eighth note gets 1 count



73 FINLANDIA - Band Arrangement

Jean Sibelius (1865 - 1957)
 arr. Bruce Pearson (b. 1942)

Moderato

p legato *f* *p* *f* *mf* *p*

Permission granted for sale outside of the U.S.A. by Breitkopf & Härtel.
 © Breitkopf & Härtel, Wiesbaden, Germany

74 TRIPLE PLAY

Allegretto

A. *mf* 1. 2.

B. *mf*

► Write in the counting and clap the rhythm before you play.

75 WE THREE KINGS

Page 41

John H. Hopkins, Jr. (1820 - 1891)

Andante

mp *f* *mp*

► Name the key in "We Three Kings." _____

76 GO FOR EXCELLENCE!



Allegro

f legato

C MAJOR KEY SIGNATURE



This key signature contains no sharps or flats.

TIME SIGNATURE

6
8

6 = 6 counts in each measure
8 = eighth note gets 1 count



77 C MAJOR SCALE SKILL



Andante *no b*

c d e f g a b c

mf 1 2 0 1 2 1 1
2 2 2
3

Arpeggio

Chords

78 OVER THE RIVER

Traditional

Allegro

f

1.

2.

▶ Draw in a breath mark at the end of each phrase.

79 OODLES OF NOODLES

Moderato

mf

80 UPS AND DOWNS

Allegretto

mp

▶ Write in the counting and draw in the bar lines before you play.

81 FOR TUBAS ONLY



Allegro

mf

SIXTEENTH NOTES



Two sixteenth notes are as long as one eighth note.

Four sixteenth notes are as long as one quarter note.

$$\text{♩} + \text{♩} = \text{♩}$$

$$\frac{1}{4} + \frac{1}{4} + \frac{1}{4} + \frac{1}{4} = \frac{1}{2} + \frac{1}{2} = 1 \text{ count}$$

Each sixteenth note gets 1/4 count in 2/4, 3/4, and 4/4 time.

82 WARM-UP - Band Arrangement

Andante



83 COUNT ME IN

Moderato



► Write in the counting and clap the rhythm before you play.

84 KEMO KIMO

American Folk Song

Allegretto



85 FRENCH MARCHING SONG

French Folk Song

Allegro



► Name the interval between the first and second notes. _____

86 FENG YANG SONG

Page 41

Chinese Folk Song

Moderato



87 GO FOR EXCELLENCE!



Patrick Gilmore (1829 - 1892)

Allegro

"When Johnny Comes Marching Home"



88 LOOBY LOO



Anonymous

(♩. = ♩)

Fine

Allegro

mf

D.C. al Fine

Musical score for 'Looby Loo' in bass clef, 6/8 time. It consists of two staves. The first staff starts with a dynamic marking of *mf* and ends with a repeat sign and the instruction *D.C. al Fine*. The second staff continues the melody.

► Name the key in "Looby Loo." _____

89 THE THUNDERER

John Philip Sousa (1854 - 1932)

Allegretto

f

Musical score for 'The Thunderer' in bass clef, 2/4 time. It consists of two staves. The first staff starts with a dynamic marking of *f*. The music features a steady eighth-note accompaniment and a melodic line with some slurs.

90 LISTEN TO THE MOCKINGBIRD

Alice Hawthorne (1827 - 1902)

Moderato

f *mp* *f*

Musical score for 'Listen to the Mockingbird' in bass clef, 4/4 time. It consists of two staves. The first staff starts with a dynamic marking of *f*, followed by *mp* and then *f* again. The music features a steady eighth-note accompaniment and a melodic line with some slurs.

91 GIVE MY REGARDS TO BROADWAY



George M. Cohan (1878 - 1942)

Allegro

to Coda ⊕

f

D.C. al Coda

⊕ Coda

Musical score for 'Give My Regards to Broadway' in bass clef, 4/4 time. It consists of three staves. The first staff starts with a dynamic marking of *f* and ends with a repeat sign and the instruction *D.C. al Coda*. The second staff continues the melody. The third staff is marked with a Coda symbol (⊕) and contains the final few notes of the piece.

92 FOR TUBAS ONLY



Page 41

E♭

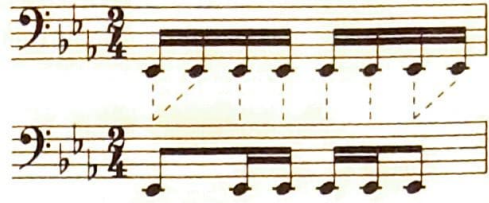
Moderato

E♭

f

Musical score for 'For Tubas Only' in bass clef, 4/4 time. It consists of one staff. The key signature is E♭ major. The tempo is *Moderato*. The music starts with a dynamic marking of *f* and features a melodic line with some slurs.

EIGHTH/SIXTEENTH NOTE COMBINATIONS



93 CHESTER - Band Arrangement

William Billings (1746 - 1800)
arr. Bruce Pearson (b. 1942)

Andante

94 STEADY AS YOU GO - Duet

Moderato

A.

B.

95 TIRRA LIRRA LOO

Canadian Folk Song

Moderato

► Write in the counting and clap the rhythm before you play.

96 GO FOR EXCELLENCE!



American Folk Song

Moderato

"Big Rock Candy Mountain"

TURKISH MARCH

from "The Ruins of Athens"

Solo with Piano Accompaniment

Ludwig van Beethoven (1770 - 1827)
arr. Bruce Pearson (b. 1942)

Tuba

Piano

Allegretto

mp - 1st time
f - 2nd time

f

mp - 1st time
f - 2nd time

p

f

p

f

f

p

f

p

1 2 3 4 5 6 7

8 9 10 11 12 13 14 15

16 17 18 19 20 21 22

23 24 25 26 27 28

29

35

42

49

29 30 31 32 33 34

f *f*

3 1 4 2

35 36 37 38 39 40 41

mf

42 43 44 45 46 47 48

mf

4 2 3 1 3

49 50 51 52 53 54 55 56

mp *p*

5 3 4 2 4 2

97 BLAZIN'

Moderato

► Name the interval between the first and second notes. _____

98 AMERICAN PATROL

Frank W. Meacham (1856 - 1909)

Moderato

to Coda ⊕

99 KERRY DANCE

Page 41

Irish Folk Song

Moderato

100 GAVOTTE

Andante

James Hook (1746 - 1827)

101 FOR TUBAS ONLY

Moderato

SINGLE SIXTEENTH NOTE



A single sixteenth note is half as long as an eighth note.

$\text{♪} = \frac{1}{4}$ count in ♩ , ♩ , and ♩ time.

DOTTED EIGHTH NOTE



A dot after a note adds half the value of the note.

$\text{♪} + \cdot = \text{♪} + \text{♪} = \text{♪}$

DOTTED EIGHTH/SIXTEENTH NOTE COMBINATION



102 DOTS OF FUN

Moderato

f
clap

103 LITTLE BROWN JUG - Duet

Joseph Eastburn Winner (1837 - 1918)

Allegro

div.

mp

▶ Write in the counting and clap the rhythm before you play.

104 OUR BOYS WILL SHINE TONIGHT

College Song

Allegretto

f

▶ Draw in a breath mark at the end of each phrase.

105

Composer _____ your name _____

▶ Compose an ending for this melody. Be sure to use the ♪ rhythm. Title and play your composition.

106 GO FOR EXCELLENCE!



Georges Bizet (1838 - 1875)

Allegro

"Farandole from L'Arlesienne Suite"

f

107 CUCKOO SONG

Page 41 

Austrian Folk Song

Andante



108 MARCH MILITAIRE

Franz Schubert (1797 - 1828)

Allegretto



109 ST. ANTHONY CHORALE

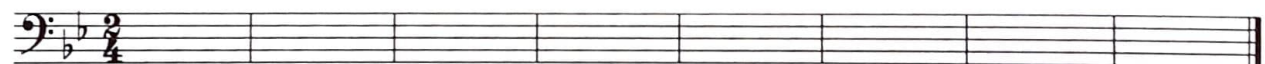
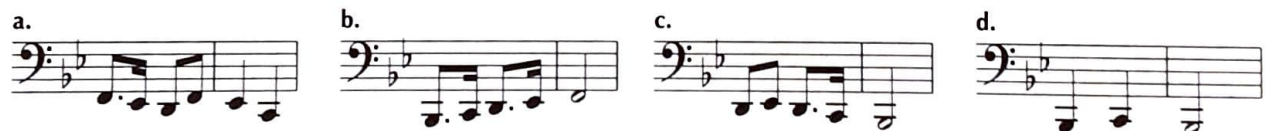
Franz Joseph Haydn (1732 - 1809)

Andante



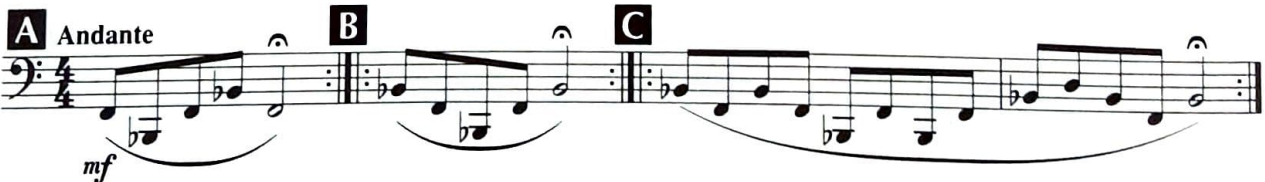
110 _____

Composer _____ your name

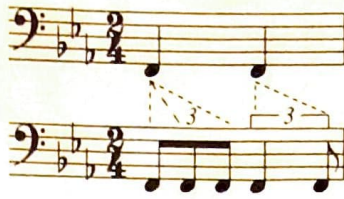
▶ Arrange these melodic pieces in any order to build a tune you like. You may use pieces more than once. Title and play your composition.

111 FOR TUBAS ONLY

▶ Play each of the lip slur patterns using the following fingerings: 0; 2; 1; 1 2; 2 3; 1 3; 1 2 3. You will be moving down a half step with each fingering.

EIGHTH NOTE TRIPLET



$\frac{1}{3} + \frac{1}{3} + \frac{1}{3} = \frac{2}{3} + \frac{1}{3} = 1$ count in $\frac{2}{4}$, $\frac{3}{4}$, and $\frac{4}{4}$ time.

TEMPO

Maestoso - majestically

112 TRIPLE TREAT

Moderato

A. 1. 2.

B. *mf*

113 STARS OF THE HEAVENS - Duet

Page 41

Mexican Folk Song

Allegro

div. *f*

f

114 LIGHT CAVALRY OVERTURE

Franz von Suppé (1819 - 1895)

Maestoso

f

115 GO FOR EXCELLENCE!



Charles Gounod (1818 - 1893)

Maestoso

"Soldiers' Chorus from Faust"

mf

mf

116 HERE WE COME A-WASSAILING



English Folk Song

Allegro

Musical score for 'Here We Come A-Wassailing' in bass clef, 6/8 time signature. The first line starts with a dynamic marking of *mf*. The second line includes a tempo change to 2/4 time, indicated by a double bar line and the notation '(♩. = ♩)'. The second line ends with a dynamic marking of *f*. The third line continues the melody.

Chromatic Notes a Problem

117 THEME FROM "ZAMPA"

Ferdinand Herold (1791 - 1833)

Allegro

Musical score for 'Theme from Zampa' in bass clef, 4/4 time signature. The first line starts with a dynamic marking of *f* and features several triplet markings (3). The second line continues the melody with more triplet markings.

118 GO FOR EXCELLENCE!



Peter Ilyich Tchaikovsky (1840 - 1893)

Allegretto

"March from the Nutcracker"

Musical score for 'Go for Excellence!' in bass clef, 3/4 time signature. The first line starts with a dynamic marking of *mf* and includes triplet markings (3). The second line is marked '1.' and the third line is marked '2.', indicating first and second endings.

CABO RICO

Band Arrangement

Chuck Elledge (b. 1961)

Moderato

1 *f* 2 3 4 5 6

7 8 9 10 11

12 13 14 15 16

17 *mf* 18 19 20 21

22 *mp* 23 24 25 26 27 *f*

28 29 30 31 32

33 34 35 36 37 38

39 40 41 42 43 44 *mp*

45 46 47 48 49 50 *mf* *f*

51 52 53 54 55 56

57 58 59-60 2 61 62 *f*

RUDIMENTAL REGIMENT

Band Arrangement

Bruce Pearson (b. 1942)
and Chuck Elledge (b. 1961)

1-4 **Allegro** 4 5 -11 7 12 13

mf

14 15 16 17

18 19 20 21

mp

22 23 24 25

26 27 28 29

f

30 31 32 33

34 35 36 37 38

39 40 41 42 43

44 45 46 47 48

p

Musical staff 44-48 in bass clef with a key signature of two flats. It contains a sequence of eighth notes. A box highlights measure 45. The dynamic marking *p* is placed below the staff.

49 50 51 52 53

mp Trb. cue

Musical staff 49-53 in bass clef. It contains a sequence of eighth notes. A box highlights measure 53. The dynamic marking *mp* and the instruction "Trb. cue" are placed below the staff.

54 55 56 57 58

mf End cue

Musical staff 54-58 in bass clef. It contains a sequence of eighth notes. The dynamic marking *mf* and the instruction "End cue" are placed below the staff.

59 60 61 62 63

f *mp* Trb. cue *mf* End cue

Musical staff 59-63 in bass clef. It contains a sequence of eighth notes. A box highlights measure 61. The dynamic markings *f*, *mp*, and *mf* are placed below the staff. The instruction "Trb. cue" is placed below measure 61, and "End cue" is placed below measure 62.

64 65 66 67 68

mp Trb. cue

Musical staff 64-68 in bass clef. It contains a sequence of eighth notes. The dynamic marking *mp* and the instruction "Trb. cue" are placed below the staff.

69 70 71 72

f

Musical staff 69-72 in bass clef. It contains a sequence of eighth notes. A box highlights measure 69. The dynamic marking *f* is placed below the staff.

73 74 75 76 77

mf *mp*

Musical staff 73-77 in bass clef. It contains a sequence of eighth notes. The dynamic markings *mf* and *mp* are placed below the staff.

78 79 80 81

f

Musical staff 78-81 in bass clef. It contains a sequence of eighth notes. A box highlights measure 79. The dynamic marking *f* is placed below the staff.

82 83 84 85 86

Musical staff 82-86 in bass clef. It contains a sequence of eighth notes.

87 88 89 90 91

Musical staff 87-91 in bass clef. It contains a sequence of eighth notes. A box highlights measure 88.

SUMMER'S RAIN

Band Arrangement

Chuck Ellledge (b. 1961)

1-3 **Andante** 3 4 5 6

7 8 9 10 11

12 13 14 15 16

17 18 19 1. 20 21

22 23 24 25 26

27 28 29 30 **Allegro** 31 32 33 34

35 36 37 38

mp *mf*

f

mp

f *f* *mf*

f

Detailed description: This is a bass clef musical score for a band arrangement. It consists of eight staves of music. The first staff starts with a 4/4 time signature and a tempo marking of 'Andante'. It features a 3-measure rest followed by a 4-measure rest, then a 5-measure rest, and finally a 6-measure phrase. Dynamics include *mp* and *mf*. The second staff continues the melody from measure 7 to 11. The third staff continues from measure 12 to 16, with a boxed measure 13. The fourth staff continues from measure 17 to 21, with a first ending bracket over measures 19-20 and a dynamic marking of *f*. The fifth staff continues from measure 22 to 26, with a dynamic marking of *mp*. The sixth staff continues from measure 27 to 34, with a boxed measure 30, a tempo change to 'Allegro', and dynamic markings of *f* and *mf*. The seventh staff continues from measure 35 to 38, with a dynamic marking of *f*.

uck Elledge (b. 1961)

39 40 41 42

43 44 45 46 47

mf

48 49 50 51 52

53 54 55 56 57

58 59 60 61

f

62 63 64 65 66

67 **Andante** 68 69 70 71 72

p *mp*

73 74 75 76 77 78

f *p* *rit.*

FRENCH MARKET BUZZARDS MARCH

Band Arrangement

Liberato Gallo
arr. Wendy Barden (b. 1955)

Allegretto

1-4 **4** **5** 6 7 8 9

10 11 12 13 14

15 16 **17** 18 19 20

21-23 **3** 24 25 26 27 28

29 30 31 32 33 **34**

35 36 37 38 39 40

41 42 43 44 45

46 47 48 49 50

f

f

f

p

mf

f

51 52 53 54 55-57 3

58 59 60 61 62

f

63 64 65 66 67

Fine *p*

68 69 70 71 72 73

74 75 76 77 78

mf

79 80 81 82

f

83-90 8 91-97 7 98 99 100 101

mf

102 103 104 105 106

f *D.S. al Fine*

ROMANZA

Tuba

Ensemble

Ludwig van Beethoven, Op. 40 (1770 - 1827)
arr. Janice Strobl Kersey (b. 1959)

1-4 **Andante** 4 5 6 7 8 9

10-12 3 13 14 15 16 17 *mp*

18 19 20 21 22-23 2 *mf*

24 25 26 27 28 29 *mp* *mf* *mp*

30 31 32 33 34 *mf* *mp*

35 36 37 38-40 3 41 *mf* *f*

42 43 44 45 46 *mf*

47 48 49 50 *f*

HORNPIPE from "Water Music"

Ensemble

George Frideric Handel (1685 - 1759)
arr. Janice Strobl Kersey (b. 1959)

Tuba

Moderato

1 *mf* - 1st time
f - 2nd time

6

10 11 12 13 *mp*

14 15 16 17

18 19 20 21 *mp* *mf*

22 23 24 25 *f*

26 27 28 29 *rit.*

MORNING SONG AND MARCH

from "Little Suite" for Solo Piano
Solo with Piano Accompaniment

Cornelius Gurlitt (1820 - 1901)
arr. Bruce Pearson (b. 1942)

Andante

"Morning Song"

1 2 3 4 5 6 7 8 9

Tuba

p *mf* *p* *mf* *p*

Piano

Andante

p *mf* *p* *mf* *p*

9 10 11 12 13 14 15 16 17

mf *p* *mf*

17 18 19 20 21 22 23 24

p *mf* *p* *mf* *p*

25 26 27 28 29 30 31 32

mf *mf*

33

34 35 36 37 38 39 40

p *mf* *p* *mf* *rit.*

5

41

Allegro
"March"

42 43 44 45 46

f

Allegro
f

2 2 1 4 3 1

47 48 49 50 51 52

53 54 55 56 57 58

rit. 2nd time

rit. 2nd time

2 2 1 2 5



EXCELLERATORS - FOR TUBAS ONLY

3 - Everyone has this one (unison) *Tu/TSx/FL*

8

14

16

24

42

EXCELLERATORS-FOR TUBAS ONLY

55



61



70



► Play this lip slur pattern using the following fingerings:

0; 2; 1; 1 2; 2 3; 1 3; 1 2 3.

You will be moving down a half step with each fingering.

75



86



92



99



► Play this lip slur pattern using the following fingerings:

0; 2; 1; 1 2; 2 3; 1 3; 1 2 3.

You will be moving down a half step with each fingering.

107



113



SCALE STUDIES

B \flat MAJOR SCALE

Arpeggio

Thirds

The B \flat Major Scale is shown in two parts. The top part is an arpeggio exercise in bass clef, 4/4 or common time, with a key signature of two flats. The bottom part is a thirds exercise in the same key and time signature.

G HARMONIC MINOR SCALE

Arpeggio

Thirds

The G Harmonic Minor Scale is shown in two parts. The top part is an arpeggio exercise in bass clef, 4/4 or common time, with a key signature of two flats. The bottom part is a thirds exercise in the same key and time signature.

E \flat MAJOR SCALE

Arpeggio

Thirds

The E \flat Major Scale is shown in two parts. The top part is an arpeggio exercise in bass clef, 4/4 or common time, with a key signature of three flats. The bottom part is a thirds exercise in the same key and time signature.

C HARMONIC MINOR SCALE

Arpeggio

Thirds

The C Harmonic Minor Scale is shown in two parts. The top part is an arpeggio exercise in bass clef, 4/4 or common time, with a key signature of three flats. The bottom part is a thirds exercise in the same key and time signature.

SCALE STUDIES

F MAJOR SCALE

Arpeggio

Thirds

A^b MAJOR SCALE

Arpeggio

Thirds

1 13 23 1 0 12 2 12 0 1 23 13 0 1

C MAJOR SCALE

Arpeggio

Thirds

CHROMATIC SCALE

A# B^b

2 0 3 2 1 2 0 1 2 0 1

RHYTHM STUDIES

1
2/4

2
2/4

3
2/4

4
2/4

1
3/4

2
3/4

3
3/4

4
3/4

5
3/4

6
3/4

1
4/4 or C

2
4/4 or C

3
4/4

4
4/4

5
4/4

6
4/4

7
4/4

8
4/4

9
4/4

10
4/4

RHYTHM STUDIES

1

3

5

7

1

3

1

3

5

7

2

4

6

8

2

4

2

4

6

8